

GODDARD
VETERINARY
GROUP

Clare Rusbridge BVMS DipECVN MRCVS
European and RCVS and European Specialist In Veterinary Neurology
Stone Lion Veterinary Centre
41 High Street,
Wimbledon,
London, SW19 5AU
Tel: +44 (0)208 946 4228
E-mail: neuro.vet@btinternet.com

Date: 24/04/2009

To whom it may concern:

This is to confirm that on the above date the magnetic resonance images (MRI) of **Eifelkids Cruel Summer Love** (Daisy)– VDH –ICC 02/3244 obtained on **13th January 2009** were reviewed

Tricolour CKCS, female, DOB 26th March 2002, microchip 276098101352033
Owner – **S Haas**

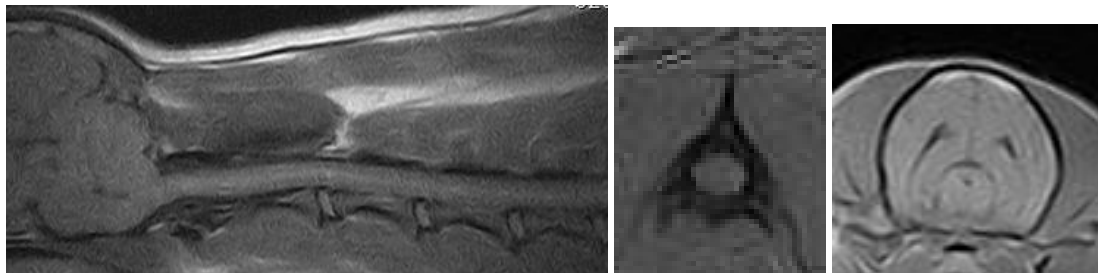
These images reveal:

Chiari malformation of the caudal skull **YES**

Dilatation of the central canal / syringomyelia **NO**

Ventricular dilatation **NO**

Very small amount Mucoïd material in **RIGHT** tympanic bullae



Using the informal Rusbridge classification the grade of **A** would be attributed to this individual.

Clare Rusbridge BVMS DipECVN MRCVS
RCVS and European Specialist In Veterinary Neurology

